

STANLEY®

IW12 HYDRAULIC IMPACT WRENCH



USER MANUAL Safety, Operation and Maintenance



© 2014 STANLEY Black & Decker, Inc.
New Britain, CT 06053
U.S.A.
66023 2/2018 Ver. 15

DECLARATION OF CONFORMITY

DECLARATION OF CONFORMITY
ÜBEREINSTIMMUNGS-ERKLÄRUNG
DECLARATION DE CONFORMITE CEE
DECLARACION DE CONFORMIDAD
DICHIARAZIONE DI CONFORMITA



I, the undersigned:
Ich, der Unterzeichnende:
Je soussigné:
El abajo firmante:
Io sottoscritto:

Weisbeck, Andy

Surname and First names/Familiennamen und Vornamen/Nom et prénom/Nombre y apellido/Cognome e nome

hereby declare that the equipment specified hereunder:
bestätige hiermit, daß erklaren Produkt genannten Werk oder Gerät:
déclare que l'équipement visé ci-dessous:
Por la presente declaro que el equipo se especifica a continuación:
Dichiaro che le apparecchiature specificate di seguito:

- Category: **Hydraulic Hand Held Impact Wrench**
Kategorie:
Catégorie:
Categoria:
Categoria:
- Make/Marke/Marque/Marca/Marca **Stanley**
- Type/Typ/Type/Tipo/Tipo: **IW1214001, IW1234001, IW12140AX**
- Serial number of equipment:
Seriennummer des Geräts:
Numéro de série de l'équipement:
Numero de serie del equipo:
Matricola dell'attrezzatura:
All

Has been manufactured in conformity with
Wurde hergestellt in Übereinstimmung mit
Est fabriqué conformément
Ha sido fabricado de acuerdo con
E' stata costruita in conformità con

Directive/Standards Richtlinie/Standards Directives/Normes Directriz/Los Normas Direttiva/Norme	No. Nr Numéro No n.	Approved body Prüfung durch Organisme agréé Aprobado Collaudato
ISO	11148-6:2010	Self
EN ISO	3744:2010	Self
EN	28662-7:2009	Self
ISO	28927-2:2009	Self
Machinery Directive	2006/42/EC:2006	Self

- Special Provisions: **None**
Spezielle Bestimmungen:
Dispositions particulières:
Provisiones especiales:
Disposizioni speciali:
- Representative in the Union: **Patrick Vervier, Stanley Dubuis 17-19, rue Jules Berthonneau-BP 3406 41034 Blois Cedex, France.**
Vertreter in der Union/Représentant dans l'union/Representante en la Union/Rappresentante presso l'Unione

Done at/Ort/Fait à/Dado en/Fatto a Stanley Hydraulic Tools, Milwaukie, Oregon USA Date/Datum/le/Fecha/Data 1-5-11

Signature/Unterschrift/Signature/Firma/Firma

Andy Weisbeck

Position/Position/Fonction/Cargo/Posizione Director of Product Development

TABLE OF CONTENTS

SAFETY SYMBOLS	4
SAFETY PRECAUTIONS.....	5
TOOL STICKERS & TAGS	6
HOSE TYPES.....	7
HOSE RECOMMENDATIONS	8
HTMA / EHTMA REQUIREMENTS	9
OPERATION.....	10
TOOL PROTECTION & CARE	12
TROUBLESHOOTING	13
SPECIFICATIONS.....	14
IW12 PARTS ILLUSTRATION	15
IW12 PARTS LIST	16
IW12 CHANGES / UPDATES TO SPOOL & MAIN HOUSING	17
IW12 CHANGES / UPDATES TO IMPACT MECHANISM	18
STANDARD & HEAVY DUTY MECHANISMS.....	20
UNDERWATER TOOLS DEPTH GUIDELINE.....	21

IMPORTANT

To fill out a product warranty validation form, and for information on your warranty, visit www.stanleyinfrastructure.com and select the Company tab > Warranty.

Note: The warranty validation record must be submitted to validate the warranty.

SERVICING: This manual contains safety, operation and routine maintenance instructions. STANLEY Infrastructure recommends that servicing of hydraulic tools, other than routine maintenance, must be performed by an authorized and certified dealer. Please read the following warning.

⚠ WARNING

SERIOUS INJURY OR DEATH COULD RESULT FROM THE IMPROPER REPAIR OR SERVICE OF THIS TOOL.

REPAIRS AND / OR SERVICE TO THIS TOOL MUST ONLY BE DONE BY AN AUTHORIZED AND CERTIFIED DEALER.

For the nearest certified dealer, call STANLEY Infrastructure at (503) 659-5660 and ask for a Customer Service Representative.

SAFETY SYMBOLS

Safety symbols and signal words, as shown below, are used to emphasize all operator, maintenance and repair actions which, if not strictly followed, could result in a life-threatening situation, bodily injury or damage to equipment.



This is the safety alert symbol. It is used to alert you to potential personal injury hazards. Obey all safety messages that follow this symbol to avoid possible injury or death.



This safety alert and signal word indicates an imminently hazardous situation which, if not avoided, will result in death or serious injury.



This safety alert and signal word indicates a potentially hazardous situation which, if not avoided, could result in death or serious injury.



This safety alert and signal word indicates a potentially hazardous situation which, if not avoided, could result in death or serious injury.



This signal word indicates a potentially hazardous situation which, if not avoided, may result in property damage.



This signal word indicates a situation which, if not avoided, will result in damage to the equipment.



This signal word indicates a situation which, if not avoided, may result in damage to the equipment.

Always observe safety symbols. They are included for your safety and for the protection of the tool.

LOCAL SAFETY REGULATIONS

Enter any local safety regulations here. Keep these instructions in an area accessible to the operator and maintenance personnel.

SAFETY PRECAUTIONS

Tool operators and maintenance personnel must always comply with the safety precautions given in this manual and on the stickers and tags attached to the tool and hose. These safety precautions are given for your safety. Review them carefully before operating the tool and before performing general maintenance or repairs.

Supervising personnel should develop additional precautions relating to the specific work area and local safety regulations. If so, place the added precautions in the space provided on in this manual.

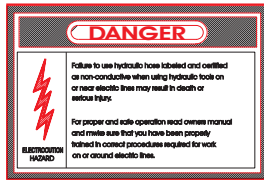
The model IW12 Hydraulic Impact Wrench will provide safe and dependable service if operated in accordance with the instructions given in this manual. Read and understand this manual and any stickers and tags attached to the tool and hose before operation.

Failure to do so could result in personal injury or equipment damage.

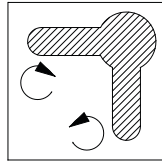


- The operator must start in a work area without bystanders. Flying debris can cause serious injury.
- Do not operate the tool unless thoroughly trained or under the supervision of an instructor. Establish a training program for all operators to ensure safe operation.
- Always wear safety equipment such as goggles, gloves, ear, head and breathing protection and safety shoes at all times when operating the tool. Use gloves and aprons when necessary.
- Inspect tool daily for loose fasteners, missing parts and leakage. Have tool repaired if necessary.
- The operator must be familiar with all prohibited work areas such as excessive slopes and dangerous terrain conditions.
- Maintain proper footing and balance at all times and do not overreach.
- Do not inspect or clean the tool while the hydraulic power source is connected. Accidental engagement of the tool can cause serious injury. Be observant of hydraulic and water hose lying about the work area, as they can be a tripping hazard.
- Always connect hoses to the tool hose couplers before energizing the hydraulic power source. Be sure all hose connections are tight and are in good condition.
- Do not operate the tool at oil temperatures above 140 °F/60 °C. Operation at higher temperatures can cause higher than normal temperatures at the tool which can result in operator discomfort.
- Do not operate a damaged, improperly adjusted or incompletely assembled impact wrench.
- Never wear loose clothing that can get entangled in the working parts of the tool.
- Keep all parts of your body away from the rotating parts. Long hair or loose clothing can become drawn into rotating components.
- Always use accessories that conform to the specifications given in “Specifications” on page 14.
- Do not reverse impact wrench rotation direction by changing fluid flow direction.
- Release the trigger if the power supply has been interrupted.
- When working near electrical conductors, always assume that all conductors are energized and that insulation, clothing and hoses can conduct electricity. Use hose certified and labeled as non-conductive.
- To avoid personal injury or equipment damage, all tool repair, maintenance and service must only be performed by authorized and properly trained personnel.
- Serious injury or death could result from a tool or accessories dropped from an elevated height.
- **Warning:** Hydraulic fluid under pressure could cause skin injection injury. If you are injured by hydraulic fluid, get medical attention immediately.
- During operation do not contact the impact mechanism, accessories or hardware as they can become very hot; use your Personal Protection Equipment (PPE).
- **Warning:** Use of this tool on certain materials could generate dust potentially containing a variety of hazardous substances such as asbestos, silica or lead. Inhalation of dust containing these or other hazardous substances could result in serious injury, cancer or death. Protect yourself and those around you. Research and understand the materials you are cutting. Follow correct safety procedures and comply with all applicable national, state or provisional health and safety regulations relating to them, including, if appropriate arranging for the safe disposal of the materials by a qualified person.

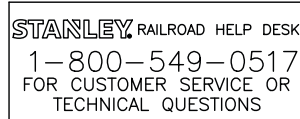
TOOL STICKERS & TAGS



12412
DANGER DECAL



29083
ROTATION DIRECTION
DECAL



73680 RAILROAD HELP
DESK DECAL



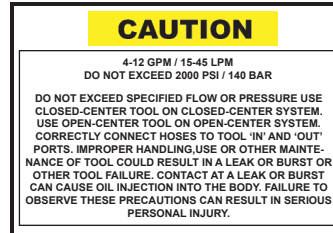
28788
Manual
Sticker



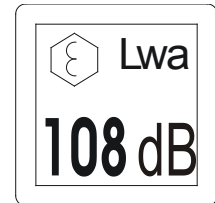
28323
CE DECAL (CE)



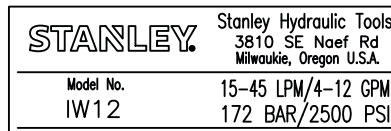
11207
CIRCUIT TYPE D
DECAL (CE)



403788
GPM DECAL



29530
SOUND POWER
LEVEL DECAL (CE)

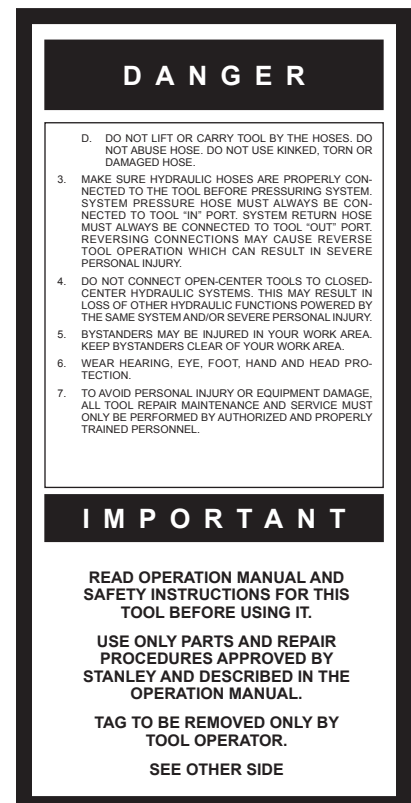
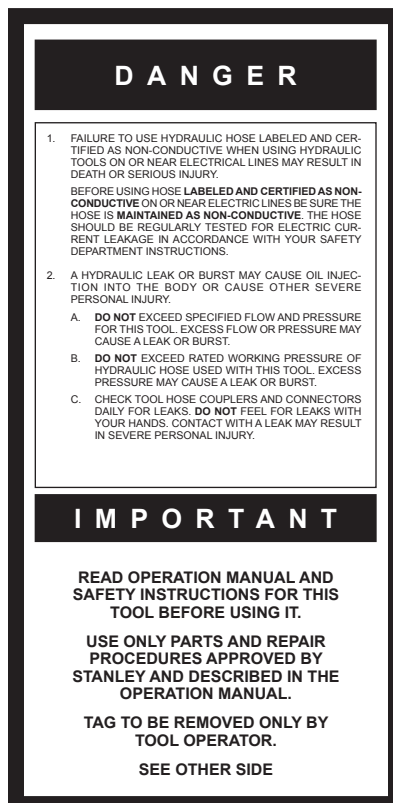


73683
IW12 NAME TAG (US & CE)

NOTE:
THE INFORMATION LISTED ON THE STICKERS SHOWN, MUST BE LEGIBLE AT ALL TIMES.

REPLACE DECALS IF THEY BECOME WORN OR DAMAGED. REPLACEMENTS ARE AVAILABLE FROM YOUR LOCAL STANLEY DISTRIBUTOR.

The safety tag (P/N 15875) at right is attached to the tool when shipped from the factory. Read and understand the safety instructions listed on this tag before removal. We suggest you retain this tag and attach it to the tool when not in use.



SAFETY TAG P/N 15875 (Shown smaller than actual size)

HOSE TYPES

The rated working pressure of the hydraulic hose must be equal to or higher than the relief valve setting on the hydraulic system. There are three types of hydraulic hose that meet this requirement and are authorized for use with STANLEY hydraulic tools. They are:

Certified non-conductive — constructed of thermoplastic or synthetic rubber inner tube, synthetic fiber braid reinforcement, and weather resistant thermoplastic or synthetic rubber cover. *Hose labeled **certified non-conductive** is the only hose authorized for use near electrical conductors.*

Wire-braided (conductive) — constructed of synthetic rubber inner tube, single or double wire braid reinforcement, and weather resistant synthetic rubber cover. *This hose is **conductive** and must never be used near electrical conductors.*

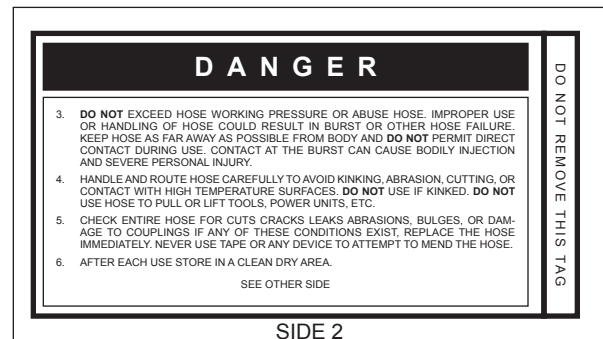
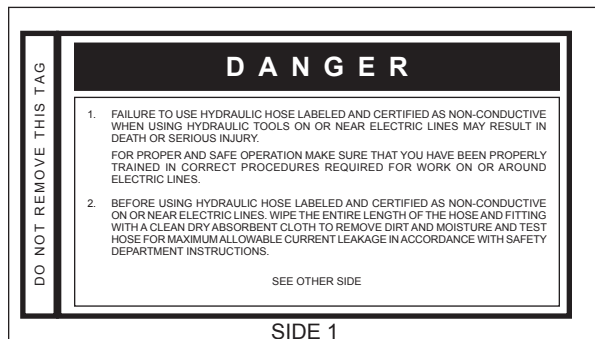
Fabric-braided (not certified or labeled non-conductive) — constructed of thermoplastic or synthetic rubber inner tube, synthetic fiber braid reinforcement, and weather resistant thermoplastic or synthetic rubber cover. *This hose is **not certified non-conductive** and must never be used near electrical conductors.*

HOSE SAFETY TAGS

To help ensure your safety, the following DANGER tags are attached to all hose purchased from STANLEY. DO NOT REMOVE THESE TAGS.

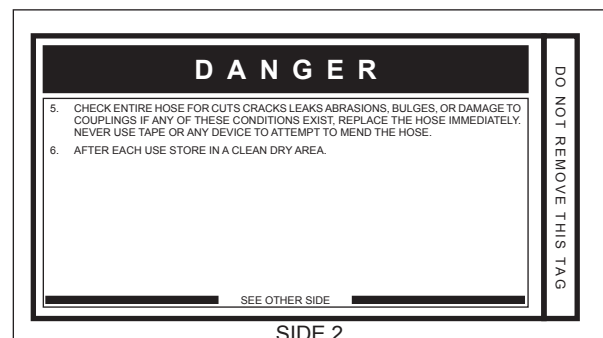
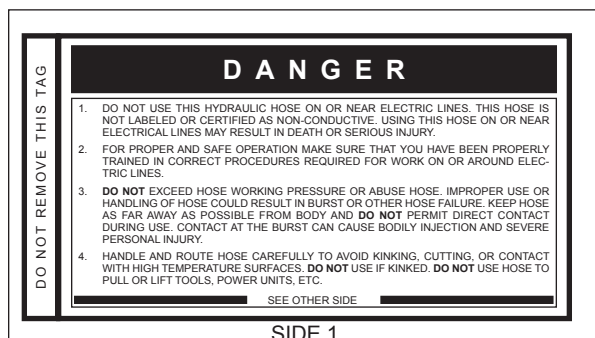
If the information on a tag is illegible because of wear or damage, replace the tag immediately. A new tag may be obtained from your STANLEY Distributor.

THE TAG SHOWN BELOW IS ATTACHED TO “CERTIFIED NON-CONDUCTIVE” HOSE



(Shown smaller than actual size)

THE TAG SHOWN BELOW IS ATTACHED TO “CONDUCTIVE” HOSE.



(Shown smaller than actual size)

HOSE RECOMMENDATIONS

Tool to Hydraulic Circuit Hose Recommendations

The chart to the right shows recommended minimum hose diameters for various hose lengths based on gallons per minute (GPM)/liters per minute (LPM). These recommendations are intended to keep return line pressure (back pressure) to a minimum acceptable level to ensure maximum tool performance.

This chart is intended to be used for hydraulic tool applications only based on STANLEY tool operating requirements and should not be used for any other applications.

All hydraulic hose must have at least a rated minimum working pressure equal to the maximum hydraulic system relief valve setting.

All hydraulic hose must meet or exceed specifications as set forth by SAE J517.

Oil Flow		Hose Lengths		Inside Diameter		USE (Press/Return)	Min. Working Pressure	
GPM	LPM	FEET	METERS	INCH	MM		PSI	BAR
Certified Non-Conductive Hose - Fiber Braid - for Utility Bucket Trucks								
4-9	15-34	up to 10	up to 3	3/8	10	Both	2250	155
Conductive Hose - Wire Braid or Fiber Braid -DO NOT USE NEAR ELECTRICAL CONDUCTORS								
4-6	15-23	up to 25	up to 7.5	3/8	10	Both	2500	175
4-6	15-23	26-100	7.5-30	1/2	13	Both	2500	175
5-10.5	19-40	up to 50	up to 15	1/2	13	Both	2500	175
5-10.5	19-40	51-100	15-30	5/8	16	Both	2500	175
5-10.5	19-40	100-300	30-90	5/8	16	Pressure	2500	175
				3/4	19	Return	2500	175
10-13	38-49	up to 50	up to 15	5/8	16	Both	2500	175
10-13	38-49	51-100	15-30	5/8	16	Pressure	2500	175
				3/4	19	Return	2500	175
10-13	38-49	100-200	30-60	3/4	19	Pressure	2500	175
				1	25.4	Return	2500	175
13-16	49-60	up to 25	up to 8	5/8	16	Pressure	2500	175
				3/4	19	Return	2500	175
13-16	49-60	26-100	8-30	3/4	19	Pressure	2500	175
				1	25.4	Return	2500	175

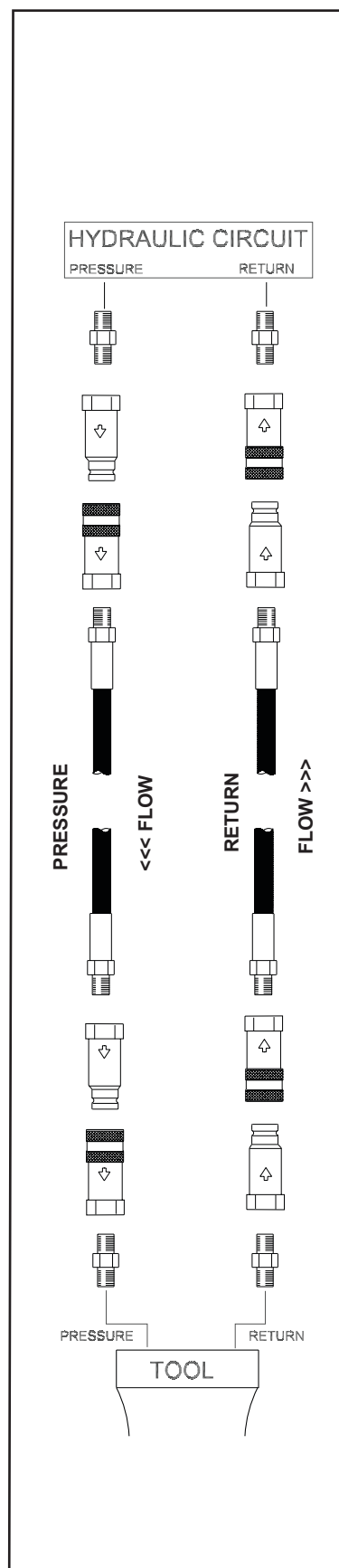


Figure 1. Typical Hose Connections

HTMA / EHTMA REQUIREMENTS

HTMA / EHTMA REQUIREMENTS

TOOL TYPE

HTMA HYDRAULIC SYSTEM REQUIREMENTS	TYPE I	TYPE II	TYPE RR	TYPE III
Flow range	4-6 GPM (15-23 LPM)	7-9 GPM (26-34 LPM)	9-10.5 GPM (34-40 LPM)	11-13 GPM (42-49 LPM)
Nominal operating pressure (At the power supply outlet)	1500 psi (103 bar)	1500 psi (103 bar)	1500 psi (103 bar)	1500 psi (103 bar)
System relief valve setting (At the power supply outlet)	2100-2250 psi (145-155 bar)	2100-2250 psi (145-155 bar)	2200-2300 psi (152-159 bar)	2100-2250 psi (145-155 bar)
Maximum back pressure (At tool end of the return hose)	250 psi (17 bar)	250 psi (17 bar)	250 psi (17 bar)	250 psi (17 bar)
Measured at a max fluid viscosity of: (At minimum operating temperature)	400 ssu* (82 centistokes)	400 ssu* (82 centistokes)	400 ssu* (82 centistokes)	400 ssu* (82 centistokes)
Temperature: Sufficient heat rejection capacity to limit maximum fluid temperature to: (At maximum expected ambient temperature)	140° F (60° C)	140° F (60° C)	140° F (60° C)	140° F (60° C)
Minimum cooling capacity at a temperature difference of between ambient and fluid temps	3 hp (2.24 kW) 40° F (22° C)	5 hp (3.73 kW) 40° F (22° C)	6 hp (5.22 kW) 40° F (22° C)	7 hp (4.47 kW) 40° F (22° C)
NOTE: Do not operate the tool at oil temperatures above 140° F (60° C). Operation at higher temperatures can cause operator discomfort at the tool.				
Filter minimum full-flow filtration Sized for flow of at least: (For cold temp startup and maximum dirt-holding capacity)	25 microns 30 GPM (114 LPM)	25 microns 30 GPM (114 LPM)	25 microns 30 GPM (114 LPM)	25 microns 30 GPM (114 LPM)
Hydraulic fluid, petroleum based (premium grade, anti- wear, non-conductive) Viscosity (at minimum and maximum operating temps)	100-400 ssu (20-82 centistokes)	100-400 ssu (20-82 centistokes)	100-400 ssu (20-82 centistokes)	100-400 ssu (20-82 centistokes)
NOTE: When choosing hydraulic fluid, the expected oil temperature extremes that will be experienced in service determine the most suitable temperature viscosity characteristics. Hydraulic fluids with a viscosity index over 140 will meet the requirements over a wide range of operating temperatures.				
*SSU = Saybolt Seconds Universal				

CLASSIFICATION

EHTMA HYDRAULIC SYSTEM REQUIREMENTS					
Flow range	3.5-4.3 GPM (13.5-16.5 LPM)	4.7-5.8 GPM (18-22 LPM)	7.1-8.7 GPM (27-33 LPM)	9.5-11.6 GPM (36-44 LPM)	11.8-14.5 GPM (45-55 LPM)
Nominal operating pressure (At the power supply outlet)	1870 psi (129 bar)	1500 psi (103 bar)	1500 psi (103 bar)	1500 psi (103 bar)	1500 psi (103 bar)
System relief valve setting (At the power supply outlet)	2495 psi (172 bar)	2000 psi (138 bar)	2000 psi (138 bar)	2000 psi (138 bar)	2000 psi (138 bar)

NOTE: These are general hydraulic system requirements. See tool specification page for tool specific requirements.

OPERATION

WRENCH TORQUE INFORMATION

FACTORS THAT AFFECT TORQUE

An impact wrench is a rotary hammer that impacts the head of a bolt or nut. It does not apply a slow steady torque like a standard torque wrench. Therefore, several factors affect the result of torque when using impact wrenches:

1. **LONG BOLTS:** Long bolts having high-friction threads with lubrication under the bolt head or associated nut can twist when impacted, then untwist before the next impact. This will especially happen if there is low friction between the bolt head or nut and the mating surface.
2. **HEAVY, LOOSE OR MULTIPLE ADAPTERS:** Heavy, loose or multiple adapters between the wrench and socket can dissipate the intensity of the impact to the bolt head or nut.
3. **AMOUNT OF IMPACT:** Maximum torque results can be obtained by allowing continuous impacting of the socket against the bolt head or nut for at least 10 seconds.
4. **HYDRAULIC FLOW RATE:** If the flow rate to the tool is too low, the hammer (or impact) speed is reduced. If the flow is correct, a change in the relief pressure does not affect the impact force. Poorly designed hydraulic circuits can result in lower flow rates and reduced impact speeds when pressure is required during impacting.

BOLT GRADE AND THREAD RECOMMENDATIONS

Allowable bolt torque is limited by both bolt thread diameter and grade of steel in the bolt. The IW12 Impact Wrench is recommended for use on the following bolt grade and thread sizes:

SAE Grade 2	1 to 1-1/2 inch / 25/38 mm
SAE Grade 5	3/4 to 1-1/4 inch / 19-32 mm
SAE Grade 8	5/8 to 1 inch / 16-25 mm

PREPARATION PROCEDURES

CHECK POWER SOURCE

1. Using a calibrated flow meter and pressure gauge, check that the hydraulic power source develops a flow of 4–12 GPM/15–45 LPM at 1000–2000 psi/70–140 bar.
2. Make certain that the hydraulic power source is equipped with a relief valve set to open at 2100 psi/145 bar minimum.

CONNECT HOSES

1. Wipe all hose couplers with a clean, lint-free cloth before making connections.
2. Connect hoses from the hydraulic power source to the tool fittings or quick disconnects. It is good practice to connect the return hose first and disconnect it last to minimize or eliminate trapped pressure within the wrench.

WARNING

Always use sockets and accessories designed for impact type applications. **DO NOT USE STANDARD SOCKETS OR ACCESSORIES. THESE CAN CRACK OR FRACTURE DURING OPERATION.**

3. Observe the flow indicators stamped on the main body assembly and the hose couplers to ensure that the flow is in the proper directions. The female couple on the tools “IN” port is the inlet (pressure) coupler.

NOTE: If the uncoupled hoses are left in the sun, pressure increase within the hoses can make them difficult to connect. Whenever possible, connect the free ends of hoses together.

WRENCH OPERATION

The IW12 is designed for 3/4-inch square sockets and accessories. Adapter part number 06790 or equivalent will permit the use of 5/8-inch quick change drive attachments.

Normal applications include installation or removal of fasteners requiring torque in the range of 300–1200 ft lb/407–1627 Nm and auger bit wood boring. **DO NOT** use the wrench as a hammer drill for metal drilling.

During normal operation it is common to see some grease leakage from around the anvil during hard use. Refer to the *IW12 Service Manual* for the correct lubrication procedures.

1. Observe all Safety Precautions.
2. Move the hydraulic circuit control valve to the “ON” position to operate the wrench.
3. Select the direction of impact desired using the rotary reversing valve located on the left side of the wrench. To select clockwise direction, move the lever toward the front (drive end) of the wrench. To select counterclockwise direction, move the lever to the rear (handle end) of the wrench.

NOTE: To more accurately tighten bolts, lubricate

OPERATION

threads, check with a torque wrench and duplicate time of impacting for other bolts of the same length and thread size.

4. Squeeze the trigger to activate the wrench.
5. Release the trigger to stop the wrench.

COLD WEATHER OPERATION

If the wrench is to be used during cold weather, preheat the hydraulic fluid at low engine speed. When using the normally recommended fluids, fluid temperature should be at or above 50 °F/10 °C (400 ssu/82 centistokes) before use.

Damage to the hydraulic system or wrench can result from use with fluid that is too viscous or thick.

POST OPERATION UNDERWATER MODELS ONLY

The wrench impact mechanism must be cleaned and greased with waterproof grease after every day of use. The main housing valve and motor are sealed and do not require maintenance unless they are malfunctioning.

Remove, clean, grease and assemble the impact mechanism as described in the *IW12 Service Manual*.

TOOL PROTECTION & CARE

NOTICE

In addition to the safety precautions found in this manual, observe the following for equipment protection and care.

- Make sure all couplers are wiped clean before connection.
- The hydraulic circuit control valve must be in the “OFF” position when coupling or uncoupling hydraulic tools. Failure to do so may result in damage to the quick couplers and cause overheating of the hydraulic system.
- Always store the tool in a clean dry space, safe from damage or pilferage.
- Make sure the circuit PRESSURE hose (with male quick disconnect) is connected to the “IN” port. The circuit RETURN hose (with female quick disconnect) is connected to the opposite port. Do not reverse circuit flow. This can cause damage to internal seals.
- Always replace hoses, couplings and other parts with replacement parts recommended by STANLEY. Supply hoses must have a minimum working pressure rating of 2500 psi/172 bar.
- Do not exceed the rated flow. See “Specifications” on page 14 for correct flow rate and model number. Rapid failure of the internal seals may result.
- Always keep critical tool markings, such as warning stickers and tags, legible.
- Tool repair should be performed by experienced personnel only.
- Make certain that the recommended relief valves are installed in the pressure side of the system.
- Do not use the tool for applications for which it was not intended.

TROUBLESHOOTING

If symptoms of poor performance develop, the following chart can be used as a guide to correct the problem. When diagnosing faults in operation of the wrench, always check that the hydraulic power source is supplying the correct hydraulic flow and pressure to the tool as listed in the following table. Use a flow meter known to be accurate. Check the flow with the hydraulic fluid temperature at least 80 °F/27 °C.

PROBLEM	CAUSE	SOLUTION
Low performance or impact.	Incorrect hydraulic flow.	Check that the hydraulic power source is producing 4–12 GPM/15–45 LPM at 1000–2000 psi/70–140 bar.
	Defective quick disconnects.	Check each quick disconnect.
	Worn impact mechanism.	Repair or replace the impact mechanism. See Service Manual.
	Hammer pins broken.	Replace with integral frame (with pins). Check relief adjustment screw setting. Job may require a larger wrench.
	Incorrect grease or periodic maintenance of the impact mechanism is not being performed.	See Service Manual.
	Spools incorrectly installed.	Valve(s) incorrectly reassembled. See Service Manual.
	Sockets or adapters too heavy or loose.	Use the correct impact type sockets or adapters.
	Long bolt with lubricated head.	Lubricate threads only.
Wrench runs too fast. Impact mechanism or screws broken.	Incorrect hydraulic flow (too high).	Check that hydraulic power source is producing 4-12 GPM/15-45 LPM at 1000-2000 psi/70-140 bar.
	Supply and return hoses reversed.	Install hoses correctly. Refer to Operation section in this manual.
	Relief sleeve or spring damaged.	Remove and replace spool assembly.
	Adjusting screw is in too far.	Adjust correctly.
Grease leaks at anvil busing, wrench warm.	Hard duty cycle and heat forces grease out.	Normal unless greasing instructions in Service Manual are not followed.
Grease leaks at anvil bushing, wrench cold.	Main shaft O-ring leaking.	Replace as required.
Oil leak at motor cap face.	Fasteners loose.	Tighten to recommended torque.
	Face O-ring worn or missing.	Replace as required.
	Motor cap/main housing damaged.	Replace as required.
Oil leaks at reversing spool.	Damaged O-rings.	Replace as required. Check Service Manual to avoid cutting O-rings on cross holes in the spool bore.
	Wrong hydraulic fluid. Circuit too hot.	Refer to Operation section for correct fluid/circuit specifications.

SPECIFICATIONS

Drive Size	3/4-inch Square Drive, 5/8-inch Hex Quick Change
Weight (with couplers)	16.8 lbs/7.6 kg
Overall Length	9-1/2-inch/24 cm
Width	4-inch/10 cm
Pressure Range (Input Pressure)	1000-2500 psi/70–172 bar
Flow Range	4–12 GPM/15–45 LPM
Optimum Flow	5–10 GPM/20–38 LPM
System Type	Open and Closed Center, HTMA Type II or III
Porting	8 SAE O-ring
Output Speed (free spin)	2000 rpm at 5 GPM/19 LPM
Input Speed	1200 Impacts per Minute
Connect Size and Type	FF Coupler
Torque	250–1200 ft. lb/340–1632 Nm

SOUND AND VIBRATION DECLARATION	
Test conducted on 1212140, S/N 121610100 operated at standard 10 GPM input	
Measured A-weighted sound power level, Lwa (ref. 1pW) in decibels	108 dBA
Uncertainty, Kwa, in decibels	3 dBA
Measured A-weighted sound pressure level, Lpa (ref. 20 µPa) at operator's position, in decibels	95 dBA
Uncertainty, Kpa, in decibels	3 dBA
Values determined according to noise test code given in ISO 15744, using the basic standard ISO 3744	
NOTE: The sum of a measured noise emission value and its associated uncertainty represents an upper boundary of the range of values which is likely to occur in measurements.	
Declared vibration emission value in accordance with EN 12096	
Measured vibration emission value (Main Handle): a	10.9 m/sec ²
Uncertainty: K	1.2 m/sec ²
Measured vibration emission value (Assist Handle): a	11.2 m/sec ²
Uncertainty: K	1.2 m/sec ²
Values determined according to ISO 28927-2, ISO 5349-1,2	

ACCESSORIES

Description	Part Number
3/4-inch Square Anvil to 3/4-inch Jacobs Chuck	01857
5/8-inch Hex Shank × 1/2-inch Square Male Adapter	05080
3/4-inch Square Anvil to 5/8-inch Hex Quick Change Adapter	06790

AUGER DRILL BITS – LINEMAN'S STYLE

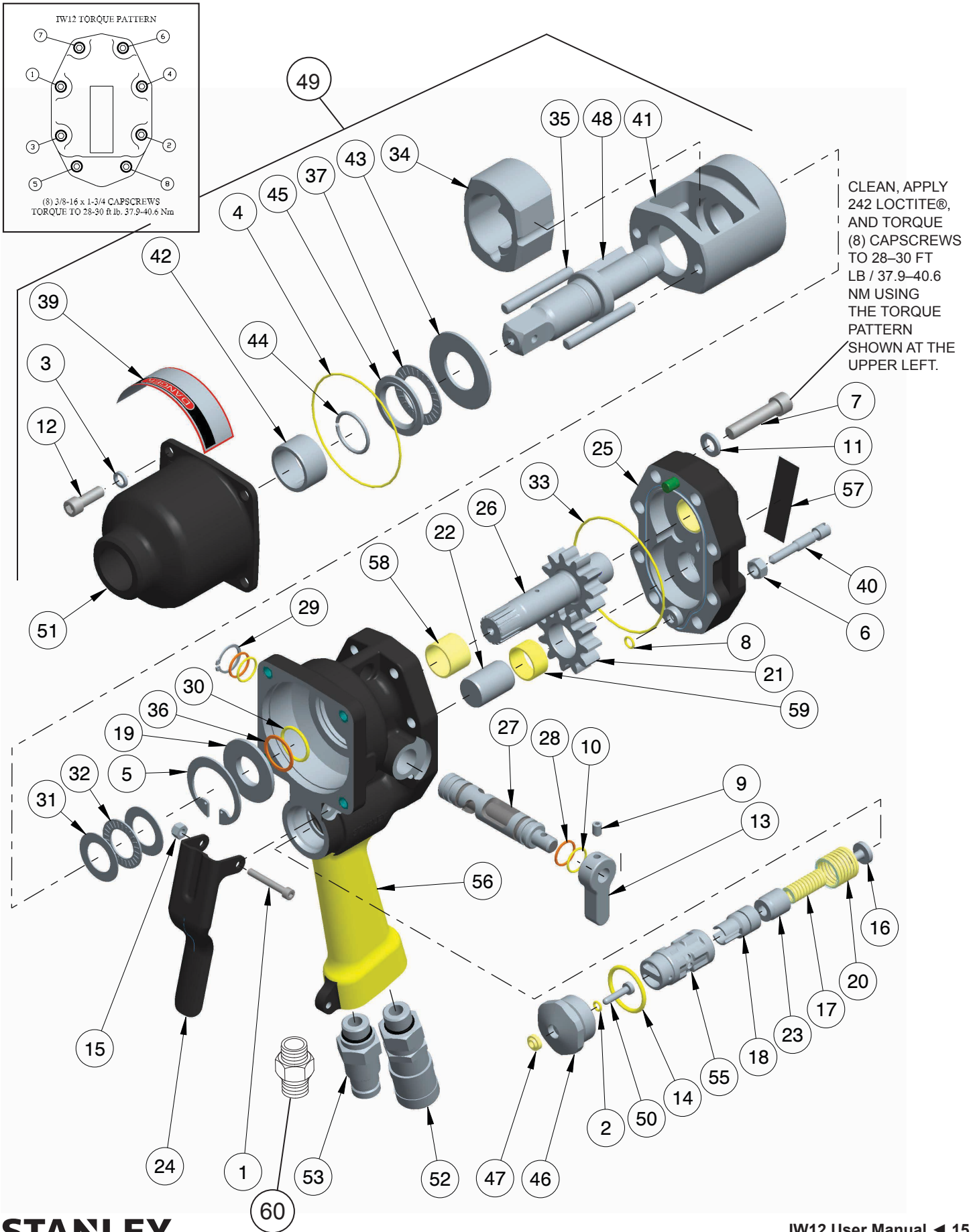
5/8-inch Hex Shank use with Hex Adapter 06790

5/8 Hex Pole Bit, 9/16 × 21 × 24 Overall Length	27845
5/8 Hex Pole Bit, 13/16 × 21 × 24 Overall Length	27847
Assist Handle Kit	71706

Adapter Part Number 06790, used to adapt 3/4-inch Square Drive to 5/8-inch Hex Quick Change.

Adapter P/N 01857, used to adapt 3/4-inch Square Drive to 3/4-inch 3-Jaw Jacobs Chuck.

IW12 PARTS ILLUSTRATION



IW12 PARTS LIST

Item No.	Part No.	Qty	Description
1	00786	1	HSHCS 10-24 X 1-3/4 SST
2	00026	1	O-RING*
3	00145	4	LOCKWASHER 5/16" I.D.
4	00149	1	O-RING *
5	00166	1	RETAINING RING
6	09277	1	HEX NUT 5/16-18UNC SST
7	01870	8	HSHCS 3/8-16 X 1-3/4 SST
8	00717	1	O-RING *
9	00580	1	SETSCREW 1/4-20 X 1/4 SST
10	01211	2	O-RING *
11	01459	8	LOCKWASHER 3/8" I.D.
12	02764	4	HSHCS 5/16-18 X 3/4 SST
12A	02764	2	HSHCS 5/16-18 X 3/4 SST (IW1234001 ONLY)
13	04939	1	LEVER
14	06533	1	O-RING *
15	07724	1	NYLOCK NUT 10-24UNC SST
16	07982	1	SPRING REST
17	07985	1	COMPRESSION COIL SPRING
18	07986	1	RELIEF SEAT
19	07987	1	BACK-UP WASHER
20	07988	1	COMPRESSION COIL SPRING
21	07989	1	IDLER GEAR ASSY (INCLUDES ITEM # 59 BUSHING)
22	07991	1	IDLER SHAFT
23	07993	1	RELIEF POPPET
24	07996	1	TRIGGER (USED ON MODELS IW12140 & IW1234001)
	28536	1	TRIGGER (USED ON MODELS WITH TRIGGERLOCKS IW1214001) SEE PAGE 17
25	07997	1	MOTOR CAP ASSY
26	08001	1	MAIN SHAFT
27	08002	1	REVERSING SPOOL
28	08015	2	BACK-UP RING *
29	08016	1	RETAINING RING EXTERNAL
	09275	1	RETAINING RING EXTERNAL (IW1234001 ONLY)
30	08017	1	O-RING *
31	08019	2	THRUST WASHER
32	08020	1	THRUST BEARING
33	08023	1	O-RING *
34	08067	1	HAMMER

Item No.	Part No.	Qty	Description
35	08069	2	HAMMER PIN
36	09396	1	BACK-UP RING *
37	09878	1	THRUST BEARING
38	15875	1	WARNING TAG (NOT SHOWN)
39	09612	1	CAUTION STICKER
40	19453	1	RELIEF ADJUSTMENT SCREW
41	20257	1	HAMMER FRAME
42	20258	1	BUSHING
43	20259	1	RETAINER
44	20262	1	RETAINING RING
45	21408	1	THRUST BEARING RACE
46	22063	1	SPOOL CAP
47	22064	1	ROD WIPER *
48	22728	1	ANVIL 3/4 SQ DRIVE
49	35451	1	IMPACT MECHANISM 3/4 SQ (DOES NOT INCLUDE ITEMS 3, 12 & 39) USED ON BOTH LAND & UNDERWATER MODELS. SEE PAGES 17, 18 & 20 FOR MORE INFO.
	12783	1	IMPACT MECHANISM U/W 3/4 SQ (DOES NOT INCLUDE ITEMS 3, 12 & 39) SEE PAGES 17, 18 & 20 FOR MORE INFO.
50	23678	1	HEADED PUSH PIN
51	29087	1	HAMMER CASE
52	58856	1	3/8 FF COUPLER BODY FEMALE (SET 58718)
	03972	1	3/8 FEMALE. 3/8 NPT FLUSH FACE SET P/N 03971
53	58857	1	3/8 FF COUPLER NOSE MALE (SET 58718)
	03973	1	3/8 MALE. 3/8 NPT FLUSH FACE SET P/N 03971
55	73046	1	ON/OFF SPOOL-OC SEE PAGE 17 BEFORE ORDERING
56	73311	1	MAIN HOUSING ASSY, SEE PAGE 17 BEFORE ORDERING
	73312	1	MAIN HOUSING ASSY, SEE PAGES 17, 18 & 20 FOR MORE INFO BEFORE ORDERING
57	73683	1	NAME TAG - IW12
58	08014	1	BUSHING (INCL W/ ITEM # 56)
59	07978	1	BUSHING (INCL W/ ITEM # 21)
60	00936	2	ADAPTER

Seal Kit P/N-13695 * Denotes Parts found in seal kit
16 ► IW12 User Manual

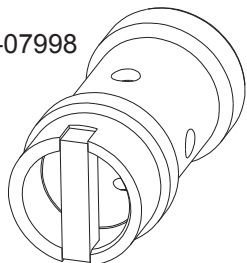
STANLEY

IW12 CHANGES / UPDATES TO SPOOL & MAIN HOUSING

VALVE SPOOL (ITEM # 55)

The old valve spool (P/N-07998) was replaced with a new valve spool (P/N-73046) in 2012. The new valve spool is backwards compatible and will work in older main housings. The old valve spool (P/N-07998) is now obsolete and no longer available.

Old Valve Spool P/N-07998



New Valve Spool P/N-73046

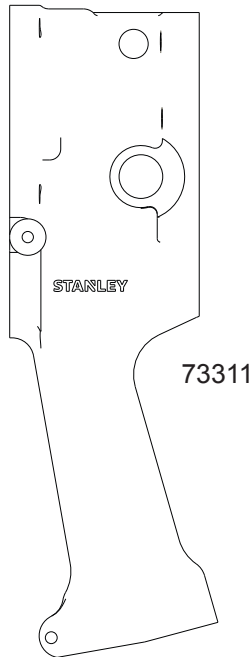


MAIN HOUSING ASSY (ITEM # 56)

This main housing change took place in February 2016

NOTE: If you have an older IW12 with serial number **111912001 and earlier** and you are replacing the main housing assy shown below, you must purchase both a new valve spool (73046) and a new main housing (73311). The old valve spool is not compatible with the new main housing design.

New main housing (P/N-73311) used on all models starting with serial number 021616114 and higher.



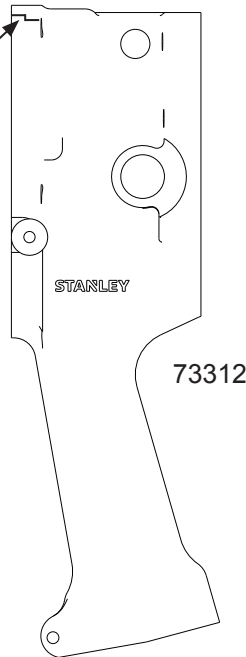
73311

73311 Main Housing uses Impact Mechanism 35451 or older mechanism 22729.

NOTE: The 35451 impact mechanism is now used for both **Land and Underwater applications**.

New main housing (P/N-73312) is a service part for use with the 12783 standard impact mechanism **ONLY**.

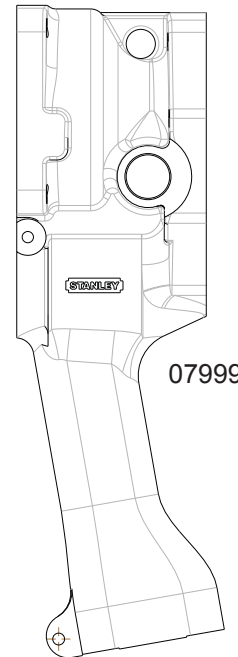
The only difference between the 73312 main housing & the 73311 is the 73312 has an additional step in the housing that allows for an O-ring in the location shown.



73312

See page 20 to verify if you have the Standard or Heavy Duty impact mechanism.

Old main housing (P/N-07999) used on all models with serial number 021616113 and lower. This main housing is obsolete & no longer available.



07999

NOTE: If you are replacing the 07999 main housing, you must purchase both the new valve spool and new main housing (see **NOTE** above).

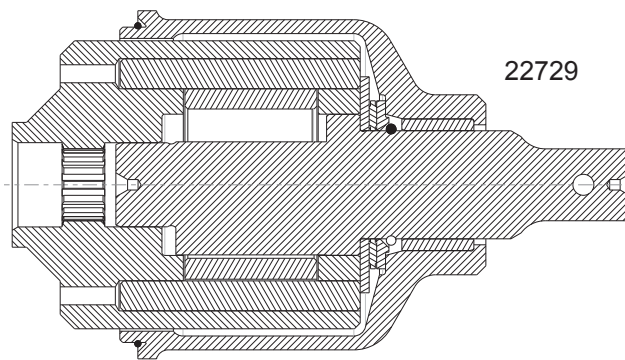
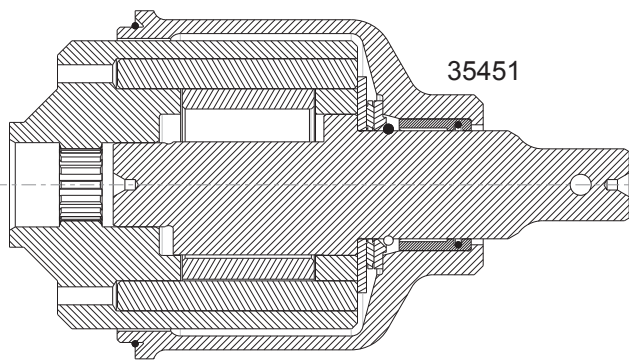
IW12 CHANGES / UPDATES TO IMPACT MECHANISM

NOTE: The newer 35451 impact mechanism is now used for both land and underwater applications.

This impact mechanism is used on all current IW12 models.

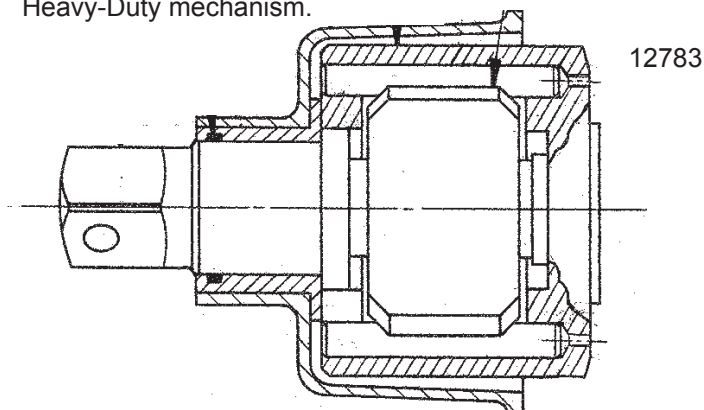
NOTE: The older 22729 impact mechanism is now obsolete and no longer available. Use part 35451.

The only difference between 22729 & 35451 mechanisms is the 35451 has an additional O-ring allowing its use for land and underwater.



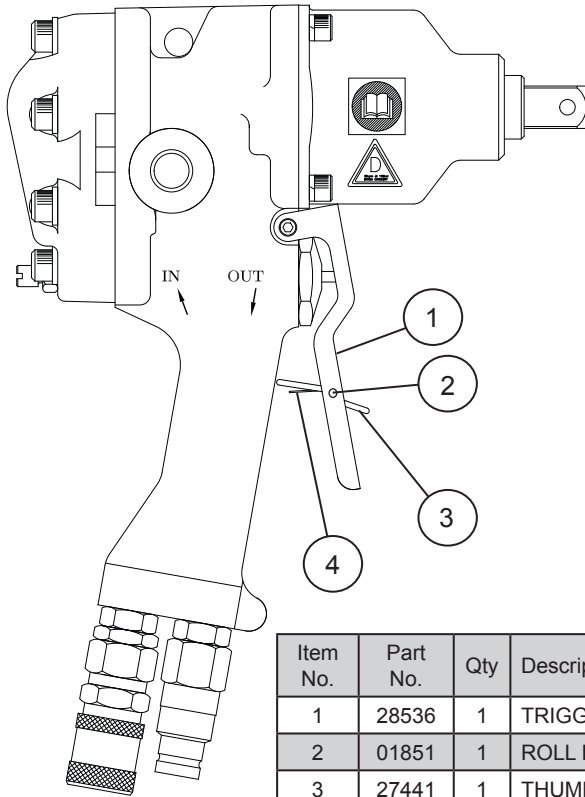
NOTE: If you have an older P/N 12783 - Impact Mechanism and need to verify whether or not it is the older standard mechanism, there are two key parts that are noticeably different.

The Anvil and Hammer Case (Refer to page 20) are the two parts to help you verify if you have a Standard or Heavy-Duty mechanism.



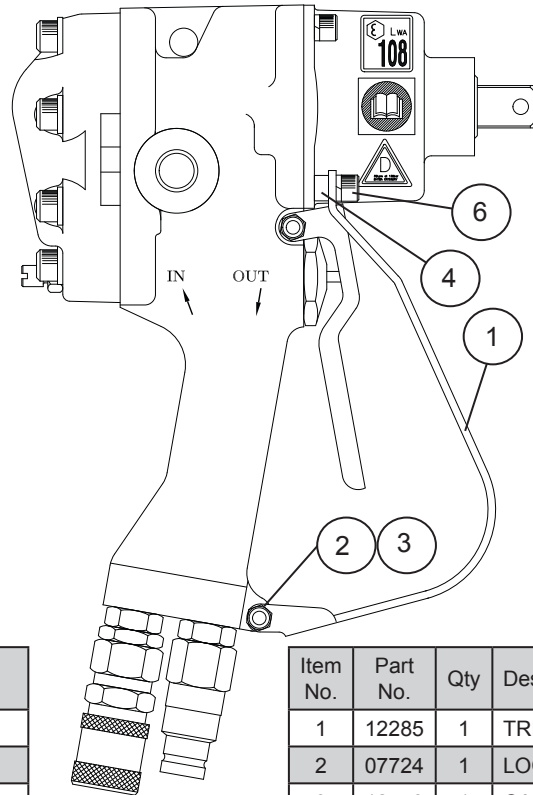
MODELS WITH SPECIFIC PARTS

Trigger Lock Models



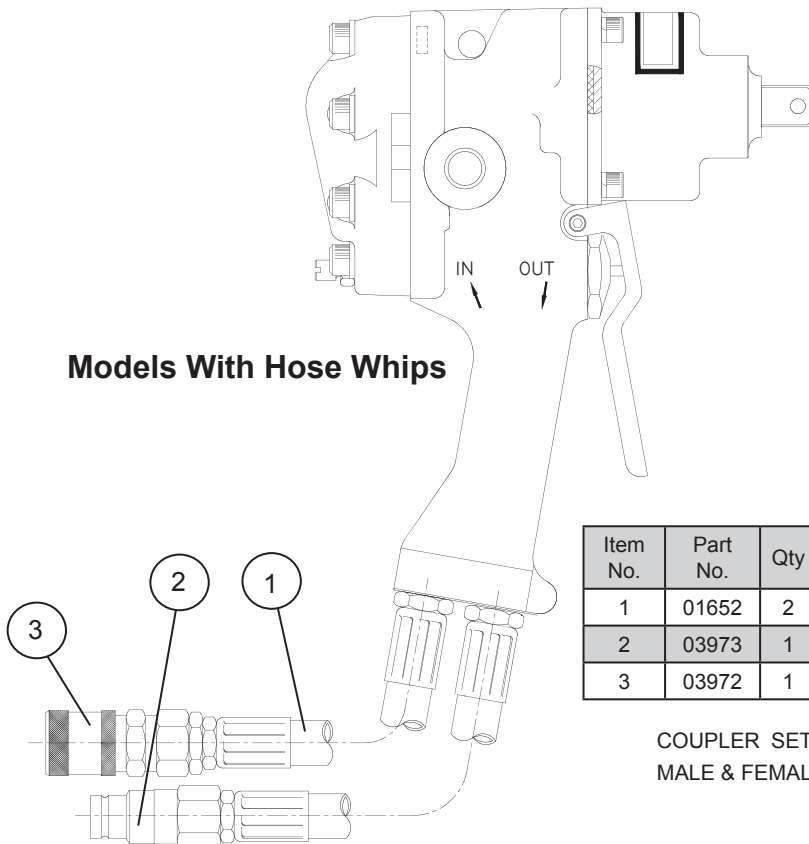
Item No.	Part No.	Qty	Description
1	28536	1	TRIGGER
2	01851	1	ROLL PIN
3	27441	1	THUMB LATCH
4	27445	1	TORSION SPRING

Trigger Guard Models



Item No.	Part No.	Qty	Description
1	12285	1	TRIGGER GUARD
2	07724	1	LOCK NUT
3	12470	1	CAPSCREW STNLS
4	36004	2	SPACER
6	02449	2	CAPSCREW STNLS

Models With Hose Whips



Item No.	Part No.	Qty	Description
1	01652	2	PIGTAIL HOSE ASSY
2	03973	1	COUPLER (MALE)
3	03972	1	COUPLER (FEMALE)

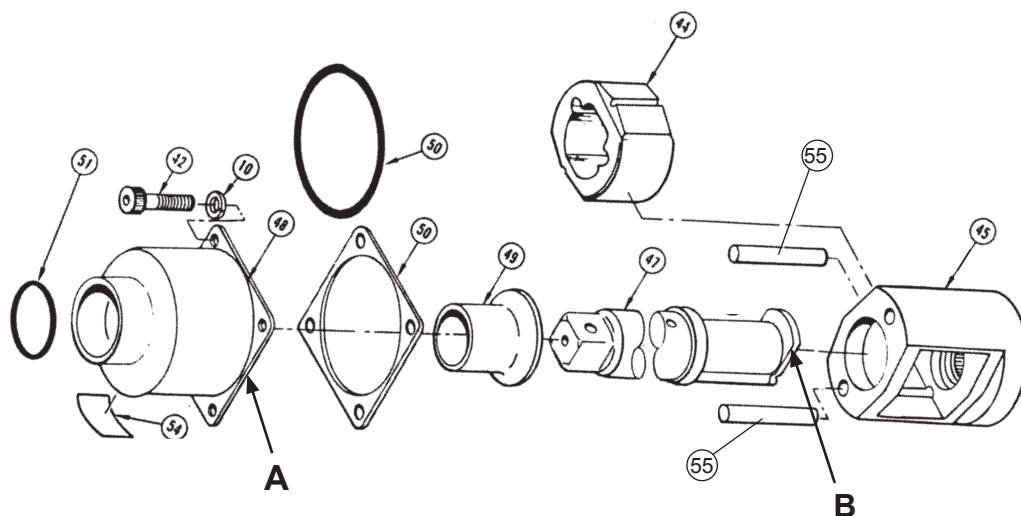
COUPLER SET P/N-03971 (INCLUDES
MALE & FEMALE COUPLERS)

STANDARD & HEAVY DUTY MECHANISMS

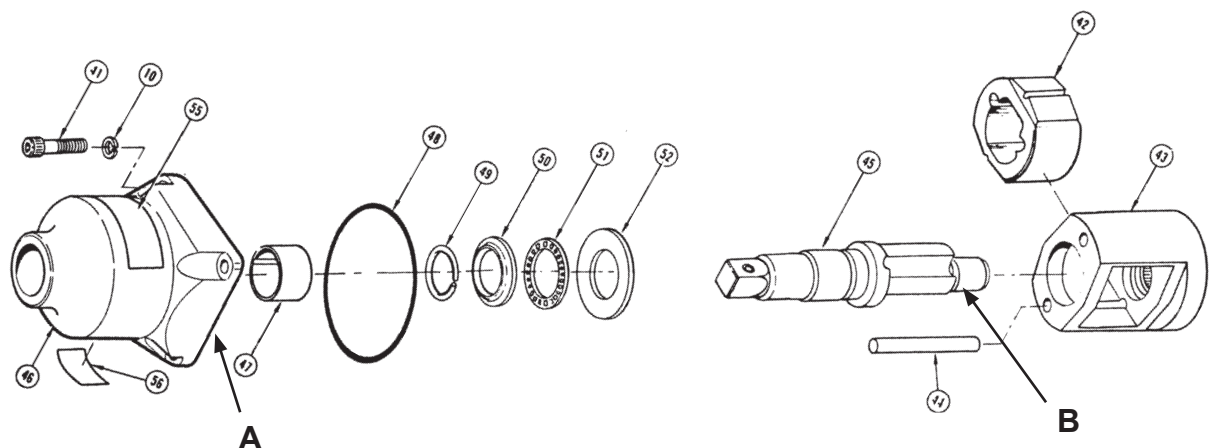
STANDARD IMPACT & HEAVY DUTY IMPACT MECHANISMS IN DETAIL

When ordering impact mechanism parts, first determine which mechanism you have by visually inspecting the following two parts indicated by the arrows (**A**: Hammer Case, **B**: Anvil).

STANDARD MECHANISM



HEAVY DUTY MECHANISM



Note the difference in the Hammer Case (**A**) when ordering.

NOTE: The Anvil (**B**) for a Standard Mechanism has a tab on one end, while the Heavy Duty Anvil has a round diameter on one end.

UNDERWATER TOOLS DEPTH GUIDELINE

UNDERWATER MODELS ONLY

⚠ CAUTION

Do not use hydraulic tools underwater that are not designated as an “underwater” model, or this will result in damage to the tool.

For underwater hydraulic tools the applications are broken down into four quadrants depending on type of tool and method of operation.

The types of tools are percussive and rotational, each with different characteristics allowing for different depth operation. With percussive tools, the nitrogen accumulator PSI must counter the increase in ambient pressure found at lower depths. Since there is a maximum PSI for percussive tools they are limited to certain depths. Rotational tools do not have accumulators and thus are capable of deeper depths.

The methods are broken into diver operated or remote operated vehicle (ROV). ROV's can reach lower depths and with an onboard hydraulic power source that is depth compensated, can operate hydraulic tools at depths of thousands of feet. ROV operation is still limited to the tool, for example a percussive tool has the same depth limitation whether ROV or diver operated.

OPERATION OVERVIEW

	PERCUSSIVE	ROTATIONAL
DIVER	Tools: Breakers, Hammer Drills and Chipping Hammers Max Depth: 500' - limitations due to accumulator PSI max (increase 40 PSI for every 100')	Tools: Grinders, Saws, Chain Saws Max Depth: 1000' - Reference hose sizing guide below
ROV	Tools: Breakers, Hammer Drills and Chipping Hammers Max Depth: 500' - limitations due to accumulator PSI max (increase 40 PSI for every 100')	Tools: Grinders, Saws, Chain Saws Max Depth: 1000' - Reference hose sizing guide below

RECOMMENDED HOSE DIAMETERS

DEPTH (FT)	8 GPM	12 GPM
100	5/8"	5/8"
300	3/4"	1"
600	1"	1"
1000	1"	1-1/4"



STANLEY®

STANLEY Infrastructure
6430 SE Lake Road
Portland, Oregon 97222 USA
(503) 659-5660 / Fax (503) 652-1780
www.stanleyinfrastructure.com